

At River City Vision Center, your eye health is our primary concern. Our goal is to diagnose eye health problems as early as possible. That is why we **now bundle 2 advanced screening procedures** and offer them to you as an integral part of your eye exam.

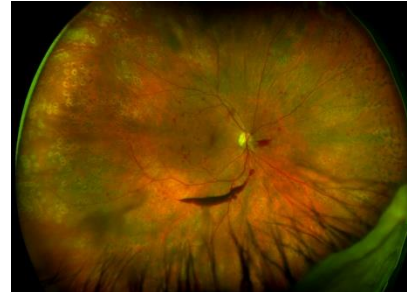
Dr. Williams continues to provide the latest in eye health technology and the *Optomap* Ultra Widefield Retinal Imaging System is the newest addition. The *Optomap* painlessly and quickly captures a digital image of the **surface** of your retina. The images can help Dr. Williams identify high blood pressure, diabetes, cancer, macular degeneration, glaucoma, and retinal holes or detachments. Your retinal images will become a part of your medical record. When performed on an annual basis, the *Optomap* allows Dr. Williams to compare each year's image side-by-side to detect early changes that may not be causing any symptoms.

Now, utilizing breakthrough technology called the *iWellness Exam*, we are able to look **below the surface** of the retina to detect eye diseases that are not visible during a traditional eye exam. The *iWellness Exam* is similar to a MRI of the eye yet it is safe, painless and only takes a few seconds. Dr. Williams recommends the *iWellness Exam* be performed annually on all patients age 9 and older. It is strongly recommended if you have a history of frequent headaches, floaters, or a high prescription as well as a history (or family history) of diabetes, hypertension, glaucoma or macular degeneration.

Dilation is the process of putting eye drops in your eyes to increase the size of the pupil; this process allows Dr. Williams a 3-D view of the inside of your eye, including the lens, vitreous, optic nerve, macula, and retina. Dilation allows for the best means to examine the health of the eye but it will cause blurred vision for up to 2 hours and light sensitivity for up to 6 hours.

Vision and medical insurances typically don't cover advanced screening procedures such as the *Optomap* or *iWellness Exam*; therefore, there is an out-of-pocket expense for these tests.

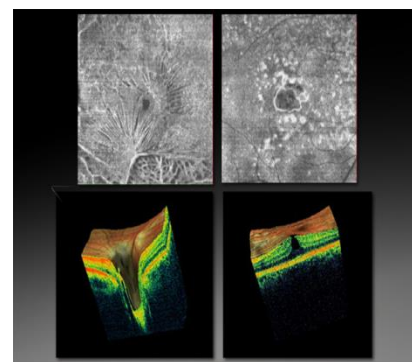
The Optomap and iWellness Exam can often be performed without the needs for dilating drops. Should any abnormalities be detected or if we can't obtain an acceptable image, then dilation may be necessary



Diabetic Retinopathy photo taken with *Optomap*



Retinal Detachment photo taken with *Optomap*



iWellness exam of abnormal retina